

9996 COTTON PICKER



JOHN DEERE

PARTS CATALOG

9996 COTTON PICKER

PC9421 (AUG-06) English

John Deere Des Moines Works

North American Edition

Litho in U.S.A. (Revised)

COPYRIGHT © 2006

DEERE & COMPANY

Moline, Illinois

All rights reserved

NP14799 -UN-02MAY05



*JOHN DEERE 9996 COTTON PICKER
(MANUFACTURED 2005-)*

(SPECIFICATIONS AND DESIGN ARE SUBJECT TO CHANGE WITHOUT NOTICE.)

PRODUCT IDENTIFICATION NUMBER LISTING INFORMATION

THE COTTON PICKER PRODUCT IDENTIFICATION NUMBER PLATE IS LOCATED ON LEFT-HAND SIDE OF MAIN FRAME, AT CENTER.

PRODUCT IDENTIFICATION NUMBER (PIN) INFORMATION IS LISTED TO SHOW ON WHICH MACHINES EACH PART CAN BE USED; FOR EXAMPLE:

-	THE PART CAN BE USED ON ALL MACHINES.
000000-	THE PART CAN BE USED ON ALL MACHINES BEGINNING WITH THE PIN OR YEAR.
-000000	THE PART CAN BE USED ON ALL MACHINES UP TO AND INCLUDING THE PIN OR YEAR LISTED.
000000-000000	THE PART CAN BE USED ON ALL MACHINES BETWEEN AND INCLUDING THE PRODUCT IDENTIFICATION NUMBERS OR YEARS LISTED.

WHEN XXXXXX'S ARE LISTED IN PLACE OF A PRODUCT IDENTIFICATION NUMBER, A CHANGE WAS MADE BUT THE EXACT PIN WAS NOT AVAILABLE WHEN THE CATALOG WAS PRODUCED.

DIRECTION ARROW

ARROWS ARE USED WITH ILLUSTRATIONS TO INDICATE THE FRONT OF THE UNIT. "RIGHT-HAND" AND "LEFT-HAND" SIDES ARE DETERMINED BY FACING IN THE DIRECTION OF MACHINE FORWARD TRAVEL.

BOX-ENCLOSED ILLUSTRATIONS

A KEY NUMBER, SHOWN IN THE PARTS LIST, IS ASSIGNED TO A BOX ENCLOSING ALL PARTS SOLD AS A SERVICE ASSEMBLY.

BOLT AND CAP SCREW STRENGTH IDENTIFICATION

BOLTS AND CAP SCREWS REQUIRED TO HAVE HIGH-STRENGTH QUALITIES EQUIVALENT TO SAE GRADE 8 ARE IDENTIFIED THROUGHOUT THIS CATALOG BY THE DESCRIPTION HS SAE 8. ALL STANDARD BOLTS AND CAP SCREWS ARE SAE GRADE 5 OR LOWER.

COMPLETE GOODS LISTINGS

COMPLETE GOODS ARE LISTED IN BOLD FACE TYPE. ORDER SEPARATELY. DO NOT INCLUDE ON REPLACEMENT PARTS ORDER.

SI UNITS OF MEASURE

METRIC DIMENSIONS ARE GIVEN, WHERE APPLICABLE, THROUGHOUT THIS PARTS CATALOG.

HOSE DIMENSIONS LISTED ARE EITHER FITTING SIZE X LENGTH X FITTING SIZE OR I.D. X LENGTH.

**Thanks very much for your reading,
Want to get more information,
Please click here, Then get the complete
manual**

JustClickHere 

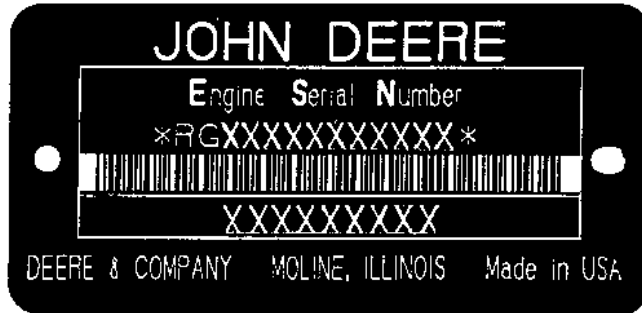
NOTE:

**If there is no response to click on the link above,
please download the PDF document first, and then
click on it.**

**Have any questions please write to me:
admin@servicemanualperfect.com**

ENGINE SERIAL NUMBER PLATE

RGP3513 -UN-01JAN94



RGP3513

FIRST LINE (ENGINE SERIAL NUMBER)

RG - JOHN DEERE WATERLOO ENGINE WORKS

6

081 (8.1 LITERS)

H - TURBOCHARGED DIESEL WITH AIR-TO-AIR INTERCOOLER

XXXXXX (SIX DIGITS)

SECOND LINE (ENGINE MODEL NUMBER)

6081HN006

N0 - JOHN DEERE DES MOINES WORKS
06 (TWO DIGITS)

DEFINES

MANUFACTURER

NUMBER OF CYLINDERS

TOTAL DISPLACEMENT

TYPE OF ASPIRATION

ENGINE SERIAL NUMBER

DEFINES

9996 COTTON PICKER

USER FACTORY
SPECIFIC APPLICATION

SECTION INDEX

GENERAL INFORMATION.....	10
ENGINE.....	20
FUEL AND AIR.....	30
ELECTRICAL.....	40
POWER TRAIN.....	50
STEERING AND BRAKES.....	60
HYDRAULICS.....	70
WHEELS, REAR AXLES AND SHEET METAL.....	80
POWER AXLE.....	85
OPERATOR STATION.....	90
PICKING UNIT LIFT.....	100
PICKING UNIT CABINET.....	110
PICKING UNIT SYSTEM.....	120
PICKING UNIT LUBRICATION SYSTEM.....	130
WATER SYSTEM.....	140
AIR SYSTEM.....	150
BASKET.....	160
PRO 12 VRS (VARIABLE ROW SPACING).....	165
DECALS.....	170
NUMERICAL INDEX.....	190

ALPHABETICAL INDEX

	PAGE		PAGE
A			
A/C COMPRESSOR	90-56	AXLE MOTOR, REAR, POWERED	85-24
A/C COMPRESSOR HARDWARE KIT	90-58	AXLE PIVOT SUPPORT, FRONT	80-2
ACCESS COVER, FUEL INJECTION PUMP	40-38	AXLE SPACERS	80-6
ACTIVE CAN BUS DEVICE	40-24	AXLE SPACERS	80-10
ACTIVE CAN BUS DEVICE	40-26	AXLE, FINAL DRIVE	50-20
ADAPTER, ENGINE OIL COOLER BYPASS (6081HN006)	20-26	AXLE, FRONT	80-4
ADAPTER, ENGINE OIL FILTER	20-28	AXLE, POWER	85-4
ADAPTER, OIL COOLER (6081HN006)	20-25	AXLE, WHEEL, AXLE	85-3
ADAPTOR, HYDROSTATIC TO HYDRAULIC PUMP	50-26	B	
ADJUST, OPERATOR'S SEAT	90-50	BACKUP ALARM SENSOR	40-64
ADJUSTER, DOFFER, UPPER	120-22	BACKUP ALARM SENSOR	40-65
ADJUSTER, DOFFER, UPPER	165-34	BAR DRUM, STUD AND BEARING, PICKER	120-20
ADJUSTING STRAP, ALTERNATOR	40-38	BAR DRUM, STUD AND BEARING, PICKER	165-20
AID, COLD WEATHER STARTING	30-22	BAR, GRID, PICKING UNIT (PRO-12 18S)	110-16
AIR CLEANER AND AIR INTAKE TUBES	30-2	BAR, GRID, PICKING UNIT (PRO-16 20S)	110-18
AIR CONDITIONER COMPRESSOR BRACKET	90-61	BAR, MIRROR	90-32
AIR CONDITIONER COMPRESSOR HOSE	90-60	BAR, PICKER	120-16
AIR CONDITIONING AND HEATER DUCTS	90-64	BAR, PICKER	165-14
AIR CONDITIONING AND HEATER HOUSING, LOWER	90-54	BASKET ASSEMBLY, LOWER FRONT	160-6
AIR CONDITIONING AND HEATER HOUSING, UPPER	90-52	BASKET ASSEMBLY, LOWER REAR	160-12
AIR CONDITIONING COMPRESSOR	90-56	BASKET ASSEMBLY, LOWER, RIGHT SIDE	160-8
AIR CONDITIONING COMPRESSOR HARDWARE KIT	90-58	BASKET DOOR CONVEYOR	160-18
AIR CONDITIONING CONDENSER	20-1	BASKET DOOR CONVEYOR CHAIN PROTECTORS AND SUPPORTS	160-20
AIR CONDITIONING SYSTEM - RECEIVER-DRYER	90-65	BASKET DOOR EXTENSION	160-26
AIR CONDITIONING SYSTEM, EVAPORATOR HEATER	90-62	BASKET DOOR FLAP AND SAFETY SWITCH	160-22
AIR CONDITIONING SYSTEM, WATER VALVE	90-63	BASKET DOOR OPENING, UPPER	160-10
AIR CONDITIONING WIRING HARNESS	40-28	BASKET DOOR STRUCTURE	160-16
AIR COOLER	20-1	BASKET EXTENSION HYDRAULICS	70-22
AIR DUCT, INTAKE	90-52	BASKET EXTENSION LATCH	160-48
AIR MANIFOLD AND DUCTS	150-4	BASKET EXTENSION LID ASSEMBLY	160-38
AIR TEMPERATURE SENSOR, INTAKE MANIFOLD	40-69	BASKET EXTENSION, FRONT	160-40
AIR TUBES AND NOZZLES	150-6	BASKET EXTENSION, LEFT	160-44
ALTERNATOR	40-36	BASKET EXTENSION, REAR	160-46
ALTERNATOR BELT	40-37	BASKET EXTENSION, RIGHT	160-42
ALTERNATOR MOUNTING	40-38	BASKET FLOOR	160-4
ALTERNATOR PULLEY	40-37	BASKET FLOOR BRUSHES	160-34
ALTERNATOR WIRING HARNESS	40-37	BASKET FLOOR CONVEYOR	160-28
ANCHOR, STEERING MOTOR	85-26	BASKET FLOOR CONVEYOR CHAIN PROTECTORS AND SUPPORTS	160-30
ANGLE, PICKING UNIT BOTTOM FRAME	165-12	BASKET FULL MONITORING SYSTEM	160-54
ANGLE, PICKING UNIT BOTTOM FRAME (PRO-12 UNIT)	110-12	BASKET HOOD ASSEMBLY	160-52
ANGLE, PICKING UNIT BOTTOM FRAME (PRO-16 UNIT)	110-14	BASKET LAMPS AND WIRING HARNESS	40-18
ANTENNA, SPEAKERS AND RADIO	40-30	BASKET LAMPS AND WIRING HARNESS	40-19
ARM, ENGINE ROCKER	20-8	BASKET LID EXTENSION	160-50
ARM, PICKER BAR	120-16	BASKET LID HANDRAILS	160-56
ARM, PICKER BAR	165-14	BASKET RAISE HYDRAULICS	70-20
ARM, STALKLIFTER PIVOT PRO-12 - 18S	110-32	BASKET RETURN AND PRESSURE HOSES	70-34
ARM, WINDSHIELD WIPER	90-30	BASKET STAND, REAR	160-14
ARMREST CONTROL PANEL, OPERATOR'S	90-38	BASKET SUPPORT ASSEMBLY	160-2
ARMREST PANEL, OPERATOR'S	90-36	BASKET VALVE	70-26
ARMREST ROCKER SWITCHES	90-36	BASKET VALVE	70-28
ARMREST ROCKER SWITCHES	90-38	BASKET WIPER FLAP	160-4
ARMREST WIRING HARNESS	40-20	BATTERIES AND CABLES	40-1
ARMREST, OPERATOR'S SEAT	90-46	BATTERY SUPPORT TRAY	80-28
ARMS, UNIT LIFT	100-4	BEAM, BASKET SUPPORT	160-2
ASHTRAY	90-38	BEARING CAP, FINAL DRIVE	50-19
ASSEMBLY, FINGER GRATES	160-55	BEARING CAP, MAIN AND THRUST (6081HN006)	20-12
AUGER, COMPACTOR	160-36	BEARING, CONNECTING ROD (6081HN006)	20-18
AXLE MOTOR, REAR, POWERED	85-22	BEARING, ENGINE MAIN AND THRUST (6081HN006)	20-17
		BEARING, PICKER BAR DRUM	120-20
		BEARING, PICKER BAR DRUM	165-20

ALPHABETICAL INDEX - CONTINUED

	PAGE		PAGE
BEARING, TRANSMISSION PINION SHAFT	50-12	CAB GLASS	90-18
BEARINGS, FINAL DRIVE	50-20	CAB INTERIOR TRIM PANELS	90-16
BELT, ALTERNATOR	40-37	CAB REAR AND SIDE SEALS	90-14
BELT, COTTON FAN DRIVE	150-2	CAB ROOF	90-22
BELT, ENGINE FAN DRIVE	30-12	CAB ROOF FLOOD LIGHTS	
BELT, HYDRAULIC PUMP DRIVE	70-1	(715201-)	40-60
BELT, INSTRUCTIONAL SEAT	90-44	CAB ROOF LIGHTS	40-57
BELT, OPERATOR'S ARMREST CONTROL PANEL	90-38	CAB ROOF, INTERIOR	
BELT, ROTARY SCREEN DRIVE	30-14	(715101-)	90-24
BELT, UNIT DRIVE COUNTERSHAFT	120-2	CAB, MAIN WIRING HARNESS	40-24
BELT, WATER PUMP DRIVE	140-4	CAB, MAIN WIRING HARNESS	40-26
BELTS, ENGINE FAN	30-24	CABINET, PLUGS AND GROMMETS	110-38
BEVEL GEAR, COMPACTOR DRIVE	160-36	CABINET, PLUGS AND GROMMETS	165-46
BLADE, VINE CUTTER	120-24	CABLE, HYDROSTATIC CONTROL	50-22
BLADE, VINE CUTTER	165-32	CABLE, REAR DRUM PRESSURE PLATE	165-18
BLADE, WIPER (LONG)	90-30	CABLE, REAR DRUM PRESSURE PLATE	
BLOCK ASSEMBLY, ENGINE SHORT	20-10	(PRO-12 18S)	110-24
BOLTS, CYLINDER HEAD (6081HN006)	20-4	CABLE, REAR DRUM PRESSURE PLATE	
BOOT, HYDROSTATIC CONTROL CABLE	50-22	(PRO-16 20S)	110-26
BOTTOM FRAME, PICKING UNIT	165-12	CABLE, WIRING	40-44
BOTTOM FRAME, PICKING UNIT		CABLES, BATTERY	40-1
(PRO-12 UNIT)	110-12	CAM, PICKER DRUM	120-14
BOTTOM FRAME, PICKING UNIT		CAM, PICKER DRUM HEAD	165-28
(PRO-16 UNIT)	110-14	CAMSHAFT	20-3
BOX, MONITOR	90-34	CAN BUS DEVICE, ACTIVE	40-24
BRACE, FEEDBACK SENSOR, ROW-TRAK	60-22	CAN BUS DEVICE, ACTIVE	40-26
BRACKET, ALTERNATOR	40-38	CAN BUS DEVICE, PASSIVE	40-12
BRACKET, CAB GLASS	90-18	CAN BUS DEVICE, PASSIVE (6 ROW)	40-58
BRACKET, DOFFER IDLER GEAR	120-27	CAP, ENGINE OIL FILTER HOUSING	20-28
BRACKET, FUEL FILTER	20-50	CAP, FUEL	30-16
BRACKET, POWER AXLE	85-12	CAP, HYDRAULIC RESERVOIR	70-2
BRACKET, REAR AXLE	80-12	CAP, HYDROSTATIC PUMP END	50-36
BRACKET, TRANSMISSION	50-2	CAP, MAIN AND THRUST BEARING	
BRACKET, WATER PUMP	140-4	(6081HN006)	20-12
BRACKET, WINDSHIELD WIPER	90-30	CAP, REAR WHEEL BEARING	80-9
BRACKETS, FIRE EXTINGUISHER	80-40	CAPACITOR, ALTERNATOR	40-36
BRACKETS, FLOOR BRUSHES	160-32	CARRIER, ENGINE ROCKER ARM COVER	20-6
BRACKETS, MIRROR	90-32	CARTRIDGE, FILTER	85-18
BRAKE OIL COOLER	30-6	CASE, GEAR, PICKING UNIT	120-6
BRAKE PEDAL	60-12	CASE, GEAR, PICKING UNIT	
BRAKE VALVE	60-19	(4- AND 5-ROW PRO-12)	165-22
BRAKE, MULTI-DISK WET	60-16	CASE, GEAR, PICKING UNIT	
BRAKE, PARK, HOSES AND FITTINGS	60-10	(4-ROW PRO-16)	165-24
BRAKES, WET, COOLING LINES	60-11	CASE, GEAR, PICKING UNIT	
BREAKERS, CIRCUIT	40-32	(6-ROW PRO-12 AND 16)	165-24
BREATHER, FUEL TANK	30-16	CASE, MONITOR	90-34
BRUSH BRACKETS, FLOOR	160-32	CASE, TRANSMISSION	50-14
BRUSH, EXTERIOR PANEL	165-4	CHAIN PROTECTORS AND SUPPORTS,	
BRUSHES, BASKET FLOOR	160-34	BASKET DOOR CONVEYOR	160-20
BULB, INTERIOR CAB ROOF	90-22	CHAIN PROTECTORS AND SUPPORTS,	
BULB, ARMREST CONTROL PANEL	90-36	BASKET FLOOR CONVEYOR	160-30
BULB, CAB ROOF FLOOD LIGHT		CHAIN, BASKET DOOR EXTENSION	160-26
(715201-)	40-60	CHAIN, CONVEYOR, BASKET DOOR	160-18
BULB, CAB ROOF LIGHT	40-57	CHAIN, CONVEYOR, BASKET FLOOR	160-28
BULB, OVERHEAD CONSOLE	90-26	CHAIN, LIFT ARM	100-4
BULB, STEERING COLUMN CONTROLS	60-2	CHAIN, LOW COTTON, PRO-12 - 18S	110-32
BULB, TRAP FLOOD LIGHTS		CHANNEL, BASKET DOOR EXTENSION	160-26
(20001-)	40-62	CHANNEL, PICKING UNIT BOTTOM FRAME	165-12
BY-PASS VALVE, OIL COOLER (6081HN006)	20-25	CHANNEL, PICKING UNIT BOTTOM FRAME	
BYPASS START LABEL (6081HN006)	20-54	(PRO-12 UNIT)	110-12
		CHANNEL, PICKING UNIT BOTTOM FRAME	
		(PRO-16 UNIT)	110-14
		CHARGE AIR COOLER HOSES	30-20
		CHARGE PUMP SHAFT, HYDROSTATIC	50-26
		CHARGE PUMP, HYDROSTATIC DRIVE	50-25
		CHARGE RELIEF VALVE, HYDROSTATIC PUMP	50-30
		CHASSIS SIDE SHIELDING	80-34

C

CAB AIR FILTER AND HOUSING	90-42
CAB DOOR	90-18
CAB DOOR LATCH	90-20

ALPHABETICAL INDEX - CONTINUED

	PAGE		PAGE
CHASSIS VALVE,HOSES AND FITTINGS.....	70-4	CONVERSION, INNER DOOR AND POST	
CHASSIS VALVE,HOSES AND FITTINGS.....	70-6	9970.....	165-72
CHASSIS WIRING HARNESS.....	40-14	CONVEYOR CHAIN PROTECTORS, BASKET DOOR.....	160-20
CHASSIS WIRING HARNESS.....	40-16	CONVEYOR CHAIN PROTECTORS, BASKET FLOOR.....	160-30
CHECK VALVE, FUEL TANK.....	30-16	CONVEYOR DOOR FRAME.....	160-16
CHECK VALVE, HEATING AND AIR CONDITIONER.....	90-54	CONVEYOR DOOR WING ASSEMBLIES.....	160-24
CHECK VALVE, HYDROSTATIC PUMP.....	50-36	CONVEYOR EXTENSION, DOOR.....	160-26
CHECK VALVE, WATER SYSTEM.....	140-8	CONVEYOR, BASKET DOOR.....	160-18
CHECK VALVE, WATER TANK.....	140-2	CONVEYOR, BASKET FLOOR.....	160-28
CIGARETTE LIGHTER.....	90-38	COOLANT (6081HN006).....	20-39
CIRCUIT BOARD, OPERATOR'S ARMREST		COOLANT CONDITIONER (6081HN006).....	20-39
CONTROL PANEL.....	90-38	COOLANT DRAIN VALVE, ENGINE	
CIRCUIT BOARD, OVERHEAD CONSOLE.....	90-26	(6081HN006).....	20-12
CIRCUIT BOX, HEATER AND AIR CONDITIONER.....	90-52	COOLANT RECOVERY SYSTEM.....	30-23
CIRCUIT BREAKERS AND RELAYS.....	40-32	COOLANT TEMPERATURE SENDER, ENGINE.....	40-70
CLEAN-OUT DOOR, COTTON DOOR.....	150-8	COOLANT TEMPERATURE SENSOR, ENGINE.....	40-68
CLEANING SOLUTION, SPINDLE.....	140-2	COOLER BYPASS TEE, HYDROSTATIC.....	50-38
CLUTCH ASSEMBLY, SLIP, FEEDER.....	165-48	COOLER, HYDRAULIC OIL.....	70-3
CLUTCH, COMPRESSOR.....	90-59	COOLING LINES, WET BRAKES.....	60-11
CLUTCH, FAN DRIVE.....	150-2	COOLING PACKAGE SUPPORT.....	30-6
CLUTCH, SLIP, DRUM.....	120-10	COTTON DOOR	
CLUTCH, SLIP, DRUM.....	165-30	NUMBER 6 OFFSET.....	150-10
CLUTCH, SLIP, LOWER GEAR CASE HUB.....	120-8	COTTON DOOR	
CLUTCH, STARTING MOTOR (6081HN006).....	20-54	NUMBER 6 OFFSET.....	150-11
COIL, FAN.....	150-2	COTTON DOOR, LARGE OUTSIDE	
COLD WEATHER START BUTTON.....	60-2	CONVERSION P12 38/40 TO VRS 2M.....	165-71
COLD WEATHER STARTING AID.....	30-22	COTTON DOOR, LARGE OUTSIDE	
COLUMN, SPINDLE MOISTENER.....	140-14	CONVERSION P12 38/40 TO VRS 2M.....	165-74
COLUMN, SPINDLE MOISTENER.....	165-44	COTTON DOORS.....	150-8
COMPACTOR.....	160-36	COTTON FAN AND DRIVE.....	150-2
COMPACTOR HYDRAULIC LINES.....	70-18	COUNTERSHAFT, UNIT DRIVE.....	120-2
COMPACTOR SWITCH, FOOT CONTROL.....	40-10	COUPLING, FUEL DIAGNOSTIC.....	20-50
COMPLETE UNIT SHELL (PRO-16).....	110-8	COUPLING, HYDROSTATIC TO HYDRAULIC PUMP.....	50-26
COMPRESSOR BRACKET, AIR CONDITIONER.....	90-61	COVER, CAB ROOF	
COMPRESSOR HARDWARE KIT, AIR		(715101-).....	90-24
CONDITIONING.....	90-58	COVER, ENGINE ROCKER ARM.....	20-6
COMPRESSOR PARTS (REFRIGERANT).....	90-57	COVER, ENGINE VALVE.....	20-6
COMPRESSOR, AIR CONDITION, HOSE.....	90-60	COVER, EXTERIOR PANELS.....	165-4
COMPRESSOR, AIR CONDITIONING.....	90-56	COVER, FUEL INJECTION PUMP ACCESS.....	40-38
COMPRESSOR, CLUTCH.....	90-59	COVER, THERMOSTAT HOUSING	
CONDITIONER, COOLANT (6081HN006).....	20-39	(6081HN006).....	20-36
CONNECTING ROD AND PISTON (6081HN006).....	20-18	COVER, WATER PUMP (6081HN006).....	20-22
CONNECTING ROD, ENGINE (6081HN006).....	20-18	CRANKSHAFT / BEARINGS (6081HN006).....	20-17
CONNECTOR, CONSOLE SWITCH.....	40-55	CRANKSHAFT / BEARINGS (6081HN006).....	20-19
CONNECTOR, ELECTRICAL, WEATHERPACK.....	40-50	CROSS SHAFT AND UNIVERSAL JOINT.....	120-5
CONNECTOR, ELECTRONIC CONTROLLER,		CROSS SHAFT UNIVERSAL JOINT.....	165-27
ENGINE SPEED SENSOR AND HORN.....	40-53	CUSHION, OPERATOR'S SEAT.....	90-46
CONNECTOR, KEY SWITCH, CONSOLE LIGHT,		CUSHION, SEAT, PASSENGER.....	90-40
ETHER SWITCH AND WARNING HORN.....	40-54	CUTTER DRIVE IDLER.....	165-48
CONNECTOR, MONITOR LIGHT MODULE AND		CUTTER SHAFT.....	165-36
TACHOMETER.....	40-56	CUTTER, VINE.....	120-28
CONSOLE LIGHT CONNECTOR.....	40-54	CYLINDER BLOCK FITTINGS (6081HN006).....	20-12
CONSOLE SWITCH CONNECTOR.....	40-55	CYLINDER BLOCK, HYDROSTATIC PUMP.....	50-32
CONSOLE, OVERHEAD.....	90-26	CYLINDER HEAD (6081HN006).....	20-4
CONTAINER, TRASH.....	90-16	CYLINDER HEAD BOLTS (6081HN006).....	20-4
CONTROL CABLE, HYDROSTATIC.....	50-22	CYLINDER HEAD GASKET (6081HN006).....	20-4
CONTROL PANEL, OPERATOR'S ARMREST.....	90-36	CYLINDER LINER, ENGINE (6081HN006).....	20-18
CONTROL PANEL, OPERATOR'S ARMREST.....	90-38	CYLINDER STOP, UNIT LIFT ARM.....	100-4
CONTROL VALVE.....	85-20	CYLINDER, BASKET EXTENSION HYDRAULIC.....	70-22
CONTROL VALVE, HEIGHT SENSOR		CYLINDER, BASKET RAISE HYDRAULIC.....	70-20
9970.....	165-62	CYLINDER, HYDRAULIC, 2-1/2" X 12"	
CONTROL VALVE, HYDRAULIC.....	85-16	(EATON).....	70-31
CONTROL VALVE, UNIT LIFT.....	70-8	CYLINDER, HYDRAULIC, 3-1/2" X 12"	
CONTROL VALVE, UNIT LIFT.....	70-9	(REPHASING) (S.N. XXXX-).....	70-30
CONTROL VALVES AND MANIFOLD, WATER.....	140-8	CYLINDER, HYDRAULIC, 3-3/4" X 8"	
CONTROLLER, ENGINE.....	20-46	(UNIT LIFT).....	70-36
CONVENIENCE OUTLET, KIT.....	40-66	CYLINDERS, HYDRAULIC (DUCT SUPPORT).....	150-18

ALPHABETICAL INDEX - CONTINUED

	PAGE		PAGE
CYLINDER, HYDRAULIC POWER AXLE.....	85-6	DOORS, UNIT.....	165-2
		DOORS, UNIT, PRO-12 - 18S.....	110-28
		DRAIN PLUG, ENGINE OIL.....	20-14
		DRAIN VALVE, ENGINE COOLANT (6081HN006).....	20-12
D		DRAIN VALVE, WATER PUMP (6081HN006).....	20-22
DAMPER, CRANKSHAFT TORSIONAL.....	20-16	DRAINBACK VALVE, ENGINE OIL.....	20-28
DECALS.....	165-68	DRIVE GEAR, DOFFER IDLER.....	165-34
DECALS.....	170-2	DRIVE GEAR, KICKER.....	165-54
DECALS.....	170-4	DRIVE GEARS.....	165-36
DECALS.....	170-6	DRIVE GEARS, UPPER HOUSING DRUM.....	120-12
DECALS.....	170-14	DRIVE GEARS, UPPER HOUSING DRUM.....	165-28
DECALS - "IMPORTANT".....	170-2	DRIVE IDLER, CUTTER.....	165-48
DECALS, FUSES.....	170-6	DRIVE SHAFT, FINAL DRIVE.....	50-16
DECALS, INSTRUCTIONS.....	170-4	DRIVE SHAFT, KICKER.....	165-54
DECALS, R.H. UNIT LIFT EXTENSIONS.....	165-26	DRIVE SHAFT, SPLINED.....	80-6
DECALS, SAFETY.....	170-12	DRIVE SHAFT, UNIT.....	120-4
DECALS, UNIT LOCATION.....	170-6	DRIVE WHEELS, SINGLE.....	80-11
DEFLECTORS, KICKER DRIVE.....	165-56	DRIVE, ENGINE FAN.....	30-12
DIAGNOSTIC COUPLING, FUEL.....	20-50	DRIVE, FINAL.....	50-18
DIFFERENTIAL (TRANSMISSION).....	50-8	DRIVE, KICKER DEFLECTORS.....	165-56
DIFFERENTIAL (TRANSMISSION).....	50-10	DRIVE, PUMP, HYDROSTATIC.....	50-21
DIODE, LOAD CENTER WIRING HARNESS.....	40-4	DRUM DRIVE GEARS, UPPER HOUSING.....	120-12
DIODE, LOAD CENTER WIRING HARNESS.....	40-5	DRUM DRIVE GEARS, UPPER HOUSING.....	165-28
DIPSTICK, ENGINE OIL (6081HN006).....	20-38	DRUM HEAD AND CAM.....	120-14
DISC, DOFFER.....	120-24	DRUM HEAD, PICKER.....	165-28
DISC, DOFFER.....	165-32	DRUM SLIP CLUTCH AND IDLER GEARS.....	120-10
DISPLACEMENT CONTROL, HYDROSTATIC PUMP.....	50-34	DRUM SLIP CLUTCH AND IDLER GEARS.....	165-30
DISTRIBUTOR ASSEMBLY, MOISTENER.....	140-14	DRUM SPEED MONITOR FIRMWARE UPGRADE.....	165-28
DISTRIBUTOR ASSEMBLY, MOISTENER.....	165-44	DRUM SPEED SENSOR.....	120-12
DOFFER.....	120-24	DRUM SPEED SENSOR.....	165-28
DOFFER.....	165-32	DRUM SPPED MONITOR FIRMWARE UPGRADE.....	120-12
DOFFER ADJUSTER AND STUB SHAFT.....	120-22	DRUM, PICKER BAR.....	120-20
DOFFER ADJUSTER AND STUB SHAFT.....	165-34	DRUM, PICKER BAR.....	165-20
DOFFER DRIVE IDLER GEAR.....	120-27	DUAL WHEELS.....	80-10
DOFFER DRIVE IDLER GEAR.....	165-34	DUCT SUPPORT.....	150-18
DOFFER GAUGE.....	165-32	DUCT, LADDER.....	150-16
DOFFER GAUGES.....	120-26	DUCT, R.H. OFFSET, 2.5".....	165-70
DOFFER IDLER GEARS.....	120-12	DUCT, ROTARY SCREEN.....	30-8
DOFFER IDLER GEARS.....	165-28	DUCT, ROTARY SCREEN.....	30-10
DOFFER RADIUS SPECIAL TOOL.....	165-32	DUCTS, AIR.....	150-4
DOME LIGHT EXTENSION WIRING HARNESS.....	40-8	DUCTS, HEATER AND AIR CONDITIONING.....	90-64
DOOR ASSEMBLY, COTTON.....	150-8	DUCTS, UNIT TO BASKET.....	150-12
DOOR CONTACT SWITCH WIRING HARNESS.....	40-9	DUCTS, UNIT TO BASKET (36"-38"-40").....	150-14
DOOR EXTENSION, BASKET.....	160-26		
DOOR HINGE, CONVEYOR.....	160-18	E	
DOOR LATCH, CAB.....	90-20	ECU.....	20-46
DOOR OPENING, BASKET, UPPER.....	160-10	ELBOW FITTING, ENGINE VENTILATING SYSTEM.....	20-6
DOOR SAFETY SWITCH AND FLAP.....	160-22	ELBOW TRANSITION, JET POST.....	150-6
DOOR STRUCTURE, BASKET.....	160-16	ELECTRICAL CONNECTOR SERVICE KIT.....	40-46
DOOR WING ASSEMBLY, CONVEYOR.....	160-24	ELECTRICAL CONNECTOR SERVICE KIT.....	40-48
DOOR, CAB.....	90-18	ELECTRICAL CONNECTOR, CONSOLE SWITCH.....	40-55
DOOR, COTTON		ELECTRICAL CONNECTOR, ELECTRONIC CONTROLLER, ENGINE SPEED SENSOR, HORN.....	40-53
NUMBER 6 OFFSET.....	150-10	ELECTRICAL CONNECTOR, KEY SWITCH, CONSOLE LIGHT, ETHER SWITCH, HORN.....	40-54
DOOR, COTTON		ELECTRICAL CONNECTOR, MONITOR LIGHT MODULE AND TACHOMETER.....	40-56
NUMBER 6 OFFSET.....	150-11	ELECTRICAL TERMINALS AND CONNECTORS, WEATHERPACK.....	40-50
DOOR, COTTON, LARGE OUTSIDE CONSERAIION P12 38/40 TO VRS 2M.....	165-71	ELECTRICAL WIRING HARNESS, CAB.....	40-24
DOOR, COTTON, LARGE OUTSIDE CONSERAIION P12 38/40 TO VRS 2M.....	165-74	ELECTRICAL WIRING HARNESS, CAB.....	40-26
DOOR, INNER CONVERSION 9970.....	165-72	ELECTRICAL WIRING SCHEMATIC.....	40-14
DOOR, ROTARY SCREEN.....	30-4	ELECTRICAL WIRING SCHEMATIC.....	40-16
DOOR, SKIP 9970.....	165-75	ELECTRICALLY OPERATED STARTING AID.....	30-22
DOORS, HYDRAULIC MODULE.....	80-32		
DOORS, UNIT.....	110-30		

ALPHABETICAL INDEX - CONTINUED

	PAGE		PAGE
ELECTRONIC CONTROL UNIT, (OPTIONAL ROWTRAK).....	40-2	FILTER CARTRIDGE.....	85-18
ELECTRONIC CONTROLLER CONNECTOR.....	40-53	FILTER HYDRAULIC LINES.....	85-18
ELECTRONIC ENGINE CONTROLLER.....	20-46	FILTER, AIR (ENGINE).....	30-2
ELEMENT, AIR CLEANER.....	30-2	FILTER, AIR, RECIRCULATION.....	90-54
ELEMENT, ENGINE OIL FILTER.....	20-28	FILTER, CAB AIR.....	90-42
END CAP, HYDROSTATIC PUMP.....	50-36	FILTER, ENGINE OIL.....	20-28
ENGINE CONTROLLER.....	20-46	FILTER, EVAPORATOR HEATER.....	90-62
ENGINE CONTROLLER, FOCUS.....	40-2	FILTER, GREASE.....	130-7
ENGINE COOLANT CONDITIONER (6081HN006).....	20-39	FILTER, HYDRAULIC RESERVOIR.....	70-2
ENGINE FAN AND DRIVES.....	30-24	FILTER, HYDRAULIC, REAR AXLE.....	85-18
ENGINE FAN DRIVE.....	30-12	FILTER, WATER.....	140-7
ENGINE FAN PULLEY.....	30-24	FINAL DRIVE.....	50-18
ENGINE GASKET KIT (6081HN006).....	20-30	FINAL DRIVE AXLE, GEAR AND BEARINGS.....	50-20
ENGINE HOODS.....	80-18	FINAL DRIVE HOUSING AND BEARING CAP.....	50-19
ENGINE OVERHAUL KIT (6081HN006).....	20-32	FINAL DRIVE PINION, DRIVE SHAFTS AND BEARINGS.....	50-16
ENGINE REBUILD GASKET KIT (6081HN006).....	20-30	FINGER GRATES ASSEMBLY.....	160-55
ENGINE SHORT BLOCK ASSEMBLY.....	20-10	FIRE EXTINGUISHER.....	80-40
ENGINE SIDE FRAMES.....	80-8	FIRMWARE, DRUM SPEED MONITOR UPGRADE.....	120-12
ENGINE SPEED SENSOR CONNECTOR.....	40-53	FIRMWARE, DRUM SPEED MONITOR UPGRADE.....	165-28
ENGINE WIRING HARNESS.....	40-29	FITTINGS, ENGINE CYLINDER BLOCK (6081HN006).....	20-12
ETHER START BUTTON.....	60-2	FITTINGS, FUEL FILTER AND LINES.....	20-50
ETHER STARTING FLUID.....	30-22	FITTINGS, HYDROSTATIC SOLENOID VALVE.....	50-44
ETHER SWITCH CONNECTOR.....	40-54	FIXTURE, FEEDBACK SENSOR, ROW-TRAK.....	85-10
EVAPORATOR HEATER, AIR CONDITIONER.....	90-62	FLANGE, PICKER BAR DRUM.....	120-20
EXCHANGER, HEAT.....	20-2	FLANGE, PICKER BAR DRUM.....	165-20
EXHAUST MANIFOLD.....	20-45	FLAP MONITOR.....	40-63
EXHAUST PIPE.....	30-18	FLAP, BASKET DOOR.....	160-22
EXHAUST VALVE SHIELD (6081HN006).....	20-4	FLAP, BASKET WIPER.....	160-4
EXHAUST VALVES (6081HN006).....	20-4	FLAP, LOWER BASKET.....	160-8
EXTENSION AND GRATE, STALKLIFTERS PRO-12 - 18S.....	110-32	FLOOD LIGHTS, TRAP (20001-).....	40-62
EXTENSION LID ASSEMBLY, BASKET.....	160-38	FLOOR BRUSH BRACKETS.....	160-32
EXTENSION, BASKET DOOR.....	160-26	FLOOR BRUSHES.....	160-34
EXTENSION, BASKET LID.....	160-50	FLOOR MAT.....	90-16
EXTENSION, BASKET, FRONT.....	160-40	FLOOR PANELS.....	90-14
EXTENSION, BASKET, LEFT.....	160-44	FLOOR, BASKET.....	160-4
EXTENSION, BASKET, REAR.....	160-46	FLOORS, OUTSIDE OF CAB (4 ROW).....	90-8
EXTENSION, BASKET, RIGHT.....	160-42	FLOORS, OUTSIDE OF CAB (6 ROW).....	90-6
EXTENSION, PLATFORM FLOOR (4 ROW).....	90-8	FLUIDS, SPINDLE CLEANER AND WETTING AGENT.....	140-2
EXTENSION, PLATFORM FLOOR (6 ROW).....	90-6	FLUSH SYSTEM SWITCH, FOOT CONTROL.....	40-10
EXTENSIONS, R.H. UNIT LIFT.....	165-26	FLUSH WATER LINES AND FITTINGS.....	140-12
EXTENSIONS, UNIT LIFT FRAME.....	100-2	FLUSH WATER LINES AND FITTINGS.....	165-42
EXTERIOR PANELS.....	165-4	FLYWHEEL.....	20-20
EXTINGUISHER, FIRE.....	80-40	FOCUS ENGINE CONTROLLER.....	40-2
F		FOLLOWER, CAMSHAFT.....	20-3
FAN.....	150-2	FOOT CONTROL SWITCHES, COMPACTOR AND FLUSH SYSTEM.....	40-10
FAN DRIVE (6081HN006).....	20-34	FRAME ASSEMBLY, HYDRO PUMP.....	80-28
FAN DRIVE PULLEY (6081HN006).....	20-34	FRAME SUPPORT, COOLING.....	30-6
FAN DRIVE, ENGINE.....	30-12	FRAME, AXLE REAR.....	80-12
FAN PULLEY (6081HN006).....	20-34	FRAME, CONVEYOR DOOR.....	160-16
FAN, BLOWER, HEATER AND AIR CONDITIONER.....	90-54	FRAME, DUCT SUPPORT.....	150-18
FAN, ENGINE.....	30-24	FRAME, ENGINE SIDE.....	80-8
FAN, HEATER AND AIR CONDITIONER.....	90-52	FRAME, MAIN.....	80-4
FEEDBACK LINK, HYDROSTATIC PUMP.....	50-32	FRAME, PICKING UNIT BOTTOM.....	165-12
FEEDBACK SENSOR BRACE, ROW-TRAK.....	60-22	FRAME, PICKING UNIT BOTTOM (PRO-12 UNIT).....	110-12
FEEDBACK SENSOR, ROW-TRAK.....	85-10	FRAME, PICKING UNIT BOTTOM (PRO-16 UNIT).....	110-14
FEEDER SLIP CLUTCH ASSEMBLY.....	165-48	FRAME, PLATFORM.....	90-4
FEEDER TUBE.....	165-36	FRAME, POWER AXLE.....	85-12
FIELD OFFICE.....	90-40	FRAMES, UNIT LIFT.....	100-2
FILL HOSE, LUBRICATION.....	130-3		
FILTER AND LINES, FUEL.....	20-50		

ALPHABETICAL INDEX - CONTINUED

PAGE

PAGE

FRONT AND REAR GUIDE BAR ASSEMBLIES165-52
FRONT AND REAR WARNING LAMPS40-6
FRONT AXLE80-4
FRONT CHASSIS WIRING HARNESS40-12
FRONT CHASSIS WIRING HARNESS (6 ROW)40-58
FRONT DRUM PRESSURE PLATE165-16
FRONT DRUM PRESSURE PLATE (PRO-12 18S)110-20
FRONT DRUM PRESSURE PLATE (PRO-16 20S)110-22
FRONT OIL SEAL, ENGINE (6081HN006)20-21
FRONT WHEEL SHIELD, LH,
4 ROW WITH DUAL WHEELS80-38
FRONT WHEEL SHIELD, RH80-36
FUEL COOLER KIT20-1
FUEL FILTER AND LINES20-50
FUEL GAUGE40-34
FUEL INJECTION LINES20-46
FUEL INJECTION NOZZLE20-46
FUEL INJECTION PUMP20-46
FUEL INJECTION PUMP ACCESS COVER40-38
FUEL INJECTION WIRING HARNESS20-6
FUEL SENDER AND REAR LIGHTS WIRING
HARNESS40-7
FUEL TANK WITH FUEL COOLER30-16
FUSES, DECALS170-6
FUSES, RELAYS AND CIRCUIT BREAKERS40-32

G

G SENSOR, FUEL INJECTION PUMP20-46
GASKET KIT, CYLINDER HEAD (6081HN006)20-30
GASKET KIT, ENGINE REBUILD (6081HN006)20-30
GASKET KIT, SHORT BLOCK (6081HN006)20-30
GASKET, CYLINDER HEAD (6081HN006)20-4
GASKET, OIL COOLER (6081HN006)20-25
GASKET, REAR OIL SEAL (6081HN006)20-19
GAUGE, DOFFER165-32
GAUGES, DOFFER120-26
GAUGES, MONITOR40-34
GEAR BOX, SKIP ROW120-1
GEAR CASE HUB, LOWER120-8
GEAR CASE, PICKING UNIT120-6
GEAR CASE, PICKING UNIT
(4- AND 5-ROW PRO-12)165-22
GEAR CASE, PICKING UNIT
(4-ROW PRO-16)165-24
GEAR CASE, PICKING UNIT
(6-ROW PRO-12 AND 16)165-24
GEAR, CAMSHAFT20-3
GEAR, COMPACTOR DRIVE160-36
GEAR, CRANKSHAFT (6081HN006)20-17
GEAR, DOFFER120-22
GEAR, DOFFER165-34
GEAR, DOFFER DRIVE IDLER120-27
GEAR, DOFFER DRIVE IDLER165-34
GEAR, DOFFER IDLER120-12
GEAR, DOFFER IDLER165-28
GEAR, ENGINE OIL PUMP (6081HN006)20-24
GEAR, FINAL DRIVE50-20
GEAR, FLYWHEEL RING20-20
GEAR, FUEL INJECTION PUMP20-46
GEAR, FUEL INJECTION PUMP DRIVE20-3
GEAR, KICKER DRIVE165-54
GEAR, TRANSMISSION PINION50-12
GEARS, DIFFERENTIAL50-8
GEARS, DIFFERENTIAL50-10
GEARS, DRIVE165-36

GEARS, DRUM IDLER120-10
GEARS, DRUM IDLER165-30
GEARS, PICKER BAR120-18
GEARS, PICKER BAR165-14
GEARS, TRANSMISSION INPUT50-4
GEARS, TRANSMISSION INTERMEDIATE50-6
GEARS, UPPER HOUSING DRUM DRIVE120-12
GEARS, UPPER HOUSING DRUM DRIVE165-28
GEARSHIFT LEVER AND LINKAGE90-66
GLASS, CAB90-18
GRATE, FINGER, BASKET EXTENSION LID160-38
GRATE, STALKLIFTER, PRO-12 - 18S110-32
GREASE CHIME CONNECTOR40-54
GREASE MANIFOLD130-7
GREASE PUMP SYSTEM130-4
GREASE VALVE70-38
GREASE VALVE HOSES AND FITTINGS70-14
GREEN FLUSH WATER LINES140-12
GREEN FLUSH WATER LINES165-42
GRID BARS AND SUPPORTS, PICKING UNIT
(PRO-12 18S)110-16
GRID BARS AND SUPPORTS, PICKING UNIT
(PRO-16 20S)110-18
GRILLE, RADIO SPEAKER40-30
GRILLE, SPEAKER90-22
GROMMETS, UNIT CABINET110-38
GROMMETS, UNIT CABINET165-46
GROUND WIRE, A/C ELECTRIC CLUTCH90-59
GUARD, TANK80-27
GUIDANCE SYSTEM, ROWTRAK60-24
GUIDE AXLE, NON-POWERED80-14
GUIDE, PLANT, PRO-12 - 18S110-32
GUIDEBAR, FRONT165-52
GUIDEBAR, REAR165-52

H

HANDLE BASKET RESET160-48
HANDLE, CAB90-14
HANDLE, CAB DOOR90-20
HANDLE, OPERATORS CONTROL PANEL90-38
HANDLE, UNIT DOOR110-30
HANDLE, UNIT DOOR165-2
HANDLE, UNIT DOOR, PRO-12 - 18S110-28
HANDRAILS, BASKET LID160-56
HANDRAILS, PLATFORM
(4 ROW)90-10
HANDRAILS, PLATFORM
(6 ROW)90-12
HANGER, PICKING UNIT110-10
HANGER, PICKING UNIT165-10
HARDWARE KIT, AIR CONDITIONING
COMPRESSOR90-58
HARNES, BASKET LAMP WIRING40-18
HARNES, BASKET LAMP WIRING40-19
HARNES, CHASSIS WIRING40-14
HARNES, CHASSIS WIRING40-16
HARNES, DOOR CONTACT SWITCH WIRING40-9
HARNES, ENGINE WIRING40-29
HARNES, FRONT CHASSIS WIRING40-12
HARNES, FRONT CHASSIS WIRING (6 ROW)40-58
HARNES, FUEL INJECTION WIRING20-6
HARNES, HYDRO PUMP AND RESERVOIR WIRING40-11
HARNES, LOAD CENTER WIRING40-4
HARNES, LOAD CENTER WIRING40-5
HARNES, MAIN CAB WIRING40-24

ALPHABETICAL INDEX - CONTINUED

	PAGE		PAGE
HARNESSES, MAIN CAB WIRING	40-26	HOSES, FLUSH WATER, GREEN.....	140-12
HARNESSES, PICKING UNIT WIRING	40-22	HOSES, FLUSH WATER, GREEN.....	165-42
HARNESSES, REAR LIGHTS AND FUEL SENDER WIRING	40-7	HOSES, HEATER.....	90-43
HARNESSES, ROW UNIT MONITOR WIRING	165-64	HOSES, HYDRAULIC OIL COOLER	70-3
HARNESSES, ROW UNIT MONITOR WIRING	165-67	HOSES, HYDRAULIC UNIT LIFT	70-12
HARNESSES, ROW UNIT MONITOR WIRING	165-69	HOSES, HYDROSTATIC	50-38
HARNESSES, ROW UNIT MONITOR WIRING	165-73	HOSES, LUBRICATION TRANSFER PUMP	130-10
HARNESSES, ROW UNIT MONITOR WIRING WITH EHHC	165-66	HOSES, STEERING HYDRAULIC.....	60-8
HARNESSES, STEERING COLUMN.....	40-43	HOSES, WATER TANK.....	140-2
HARNESSES, TETHER SWITCH (NO. 3 OR 4 UNIT).....	40-3	HOSES, WATER VALVE	140-8
HARNESSES, UNIT SPEED SYNCHRONIZATION (SERVICE TOOL).....	40-22	HOSES, WATER, MOISTENER COLUMN (CLEAR).....	140-10
HARNESSES, WIRING, POWERED REAR AXLE.....	85-15	HOSES, WATER, MOISTENER COLUMN (CLEAR).....	165-40
HEAD BOLT KIT (6081HN006).....	20-4	HOUSING, AIR CONDITIONER/HEATER, LOWER	90-54
HEAD GASKET, CYLINDER (6081HN006).....	20-4	HOUSING, AIR CONDITIONER/HEATER, UPPER.....	90-52
HEAD, CYLINDER (6081HN006).....	20-4	HOUSING, CAB AIR FILTER	90-42
HEAD, PICKER DRUM	120-14	HOUSING, CAB ROOF (715101-).....	90-24
HEAD, PICKER DRUM	165-28	HOUSING, ENGINE OIL FILTER	20-28
HEADLINER, CAB	90-22	HOUSING, ENGINE ROCKER ARM COVER.....	20-6
HEADLINER, CAB ROOF (715101-).....	90-24	HOUSING, FAN.....	150-2
HEAT EXCHANGER	20-2	HOUSING, FINAL DRIVE	50-19
HEAT EXCHANGER CORES	20-1	HOUSING, HYDROSTATIC PUMP	50-32
HEATER AND AIR CONDITIONING DUCTS	90-64	HOUSING, MANIFOLD (WATER, GREASE AND HYDRAULIC).....	140-8
HEATER AND AIR CONDITIONING HOUSING, LOWER	90-54	HOUSING, MONITOR.....	90-34
HEATER AND AIR CONDITIONING HOUSING, UPPER	90-52	HOUSING, PICKING UNIT	110-1
HEATER HOSES	90-43	HOUSING, PICKING UNIT UPPER (PRO-12 UNIT).....	110-2
HEIGHT SENSING LINKAGE 9970	165-60	HOUSING, PICKING UNIT UPPER (PRO-16 UNIT).....	110-4
HEIGHT SENSING LINKAGE AND SENSOR	110-34	HOUSING, REAR OIL SEAL (6081HN006).....	20-19
HEIGHT SENSING LINKAGE AND SENSOR	165-58	HOUSING, THERMOSTAT (6081HN006).....	20-36
HEIGHT SENSING SENSORS 9970	165-60	HOUSING, TRANSMISSION	50-14
HEIGHT SENSOR CONTROL VALVE 9970	165-62	HOUSING, UPPER DOFFER ADJUSTING.....	120-22
HIGH INTENSITY DISCHARGE LIGHTS (715201-).....	40-61	HOUSING, UPPER DOFFER ADJUSTING	165-34
HINGE, CONVEYOR DOOR.....	160-18	HUB, KICKER WHEEL	165-56
HINGE, PASSENGER SEAT CONSOLE	90-40	HUB, LOWER GEAR CASE.....	120-8
HOLDER, MOISTENER PAD	140-14	HUB, REAR WHEEL	80-9
HOLDER, MOISTENER PAD	165-44	HYDRAULIC CONTROL VALVE	85-16
HOOD ASSEMBLY, BASKET.....	160-52	HYDRAULIC CONTROL VALVE, UNIT LIFT	70-8
HOODS, ENGINE	80-18	HYDRAULIC CONTROL VALVE, UNIT LIFT	70-9
HORN	40-42	HYDRAULIC CYLINDER POWER AXLE	85-6
HORN BUTTON.....	60-2	HYDRAULIC CYLINDER, 2-1/2" X 12" (EATON)	70-31
HORN CONNECTOR	40-53	HYDRAULIC CYLINDER, 3-1/2" X 12" (REPHASING) (S.N. XXXX-).....	70-30
HORN CONNECTOR, 3-SECOND AND PULSING	40-54	HYDRAULIC CYLINDER, 3-3/4" X 8" (UNIT LIFT)	70-36
HOSE, AIR CONDITIONER COMPRESSOR.....	90-60	HYDRAULIC CYLINDERS (DUCT SUPPORT)	150-18
HOSE, BASKET EXTENSION HYDRAULIC	70-22	HYDRAULIC HOSES, LUBRICATION PUMP	130-4
HOSE, BASKET RAISE HYDRAULIC	70-20	HYDRAULIC HOSES, UNIT LIFT	70-12
HOSE, ENGINE VENTILATING SYSTEM	20-6	HYDRAULIC LINES, BASKET EXTENSION	70-22
HOSE, LIFT ARM LUBRICATION	100-4	HYDRAULIC LINES, BASKET RAISE	70-20
HOSE, LUBRICATION FILL	130-3	HYDRAULIC LINES, COMPACTOR.....	70-18
HOSE, LUBRICATION MANIFOLD	130-7	HYDRAULIC LINES, FILTER	85-18
HOSE, LUBRICATION PUMP	130-4	HYDRAULIC MODULE PANELS AND DOORS.....	80-32
HOSE, ROTARY SCREEN	30-8	HYDRAULIC MOTOR POWER AXLE	85-6
HOSE, ROTARY SCREEN	30-10	HYDRAULIC MOTOR ASSY., 100 CC SAUER-SUNDSTRAND (PROPULSION)	50-42
HOSE, UNIT LUBRICATION.....	130-8	HYDRAULIC MOTOR ASSY., 75 CC SAUER-SUNDSTRAND (UNIT DRIVE)	50-40
HOSE, UNIT LUBRICATION.....	165-38	HYDRAULIC MOTOR, TRANSMISSION DRIVE	50-2
HOSE, WATER PUMP	140-4	HYDRAULIC OIL COOLER AND HOSES	70-3
HOSES AND FITTINGS, PARK BRAKE	60-10	HYDRAULIC OIL, HY-GARD.....	70-2
HOSES AND FITTINGS, RETURN HYDRAULIC FILT ER	70-32	HYDRAULIC PUMP (45 CM3 (2.75 CU. IN.))	70-10

ALPHABETICAL INDEX - CONTINUED

	PAGE		PAGE
HYDRAULIC PUMP AND GREASE VALVE HOSES AND FITTINGS	70-14	KICKER DRIVE DEFLECTORS	165-56
HYDRAULIC PUMP DRIVE	70-1	KICKER DRIVE GEAR ASSEMBLY	165-54
HYDRAULIC RESERVOIR	70-2	KICKER DRIVE SHAFT ASSEMBLY	165-54
HYDRAULIC STEERING LINES AND HOSES	60-8	KICKER WHEEL HUB	165-56
HYDRAULIC SYSTEM		KIT, CONVENIENCE, OUTLET	40-66
POWER AXLE	85-6	KIT, CYLINDER LINER O-RING (6081HN006)	20-18
HYDRAULIC VALVE		KIT, ELECTRICAL CONNECTOR SERVICE	40-46
POWER AXLE	85-6	KIT, ELECTRICAL CONNECTOR SERVICE	40-48
HYDRO PUMP MODULE ASSEMBLY	80-28	KIT, ENGINE OVERHAUL (6081HN006)	20-32
HYDRO PUMPS AND RESERVOIR WIRING HARNESS	40-11	KIT, ENGINE ROCKER ARM AND SHAFT	20-8
HYDROSTATIC CIRCUIT	50-38	KIT, HEAD BOLT (6081HN006)	20-4
HYDROSTATIC CONTROL CABLE	50-22	KIT, LUBRICATION PUMP	130-6
HYDROSTATIC DRIVE CHARGE PUMP	50-25	KIT, MULTI-DISK WET BRAKE	60-16
HYDROSTATIC PUMP	50-38	KIT, PISTON AND CYLINDER LINER (6081HN00)	20-18
HYDROSTATIC PUMP AUXILIARY PUMP MOUNTING	50-26	KIT, PISTON RING (6081HN006)	20-18
HYDROSTATIC PUMP CONTROL LEVERS AND RODS	50-24	KIT, SEAL, COMPRESSOR, REFRIGERANT	90-57
HYDROSTATIC PUMP DISPLACEMENT CONTROL	50-34	KIT, TERMINAL AND WIRING	40-44
HYDROSTATIC PUMP DRIVE	50-21	KIT, WATER PUMP SEAL (6081HN006)	20-22
HYDROSTATIC PUMP DRIVE	70-1	KNOB GEARSHIFT	90-66
HYDROSTATIC PUMP END CAP	50-36	KNOB, ARMREST CONTROL PANEL	90-36
HYDROSTATIC PUMP HOUSING, SWASHPLATE AND CYLINDER BLOCK	50-32	KNOB, CAB AIR FILTER DOOR	90-42
HYDROSTATIC PUMP SHAFT AND SERVO ASSY.	50-28	KNOB, OFFSET, ROW-TRAK	60-23
HYDROSTATIC PUMP VALVES, PLUGS AND SEALS	50-30	KNOB, OVERHEAD CONSOLE	90-26
HYDROSTATIC SOLENOID VALVE FITTINGS	50-44		
		L	
		LABEL, BYPASS START (6081HN006)	20-54
I		LADDER DUCT	150-16
IDLER ARM, ROTARY SCREEN DRIVE	30-14	LADDER, PLATFORM	
IDLER GEAR, DOFFER DRIVE	120-27	(4 ROW)	80-38
IDLER GEAR, DOFFER DRIVE	165-34	LADDER, PLATFORM FRAME	90-4
IDLER GEARS, DRUM	120-10	LAMPS AND WIRING HARNESS, BASKET	40-18
IDLER GEARS, DRUM	165-30	LAMPS AND WIRING HARNESS, BASKET	40-19
IDLER, CUTTER DRIVE	165-48	LARGE OUTSIDE COTTON DOOR	
IDLER, UNIT	165-28	CONVERSION P12 38/40 TO VRS 2M	165-71
IGNITION SWITCH	60-2	LARGE OUTSIDE COTTON DOOR	
IMPELLER, WATER PUMP	140-6	CONVERSION P12 38/40 TO VRS 2M	165-74
INJECTION PUMP, FUEL	20-46	LATCH, BASKET EXTENSION	160-48
INNER DOOR AND POST CONVERSION		LATCH, CAB DOOR	90-20
9970	165-72	LATCH, MOISTENER COLUMN	140-14
INPUT SHAFT, TRANSMISSION	50-4	LATCH, MOISTENER COLUMN	165-44
INSERTS, VALVE SEAT (6081HN006)	20-4	LENS, CAB ROOF FLOOD LIGHT	
INSIDE CAB MIRROR	90-33	(715201-)	40-60
INSTRUCTIONAL SEAT SEATBELT	90-44	LENS, CAB ROOF LIGHT	40-57
INTAKE MANIFOLD	20-44	LEVELER ASSY., HYDROSTATIC PUMP	50-28
INTAKE VALVES (6081HN006)	20-4	LEVER, GEARSHIFT	90-66
INTAKE, ENGINE OIL PUMP	20-14	LEVERS, HYDROSTATIC PUMP CONTROL	50-24
INTERIOR CAB ROOF		LID ASSEMBLY, BASKET EXTENSION	160-38
(715101-)	90-24	LID EXTENSION, BASKET	160-50
INTERMEDIATE SHAFT, TRANSMISSION	50-6	LIFT ARMS, UNIT	100-4
		LIFT BRACKET, HYDROSTATIC PUMP	50-36
		LIFT EXTENSIONS, R.H.	165-26
		LIFT FRAMES, UNIT	100-2
J		LIFT HOSES	70-12
JACKSHAFT, UNIT DRIVE	120-2	LIFT STRAP, ENGINE	20-27
JET POST TRANSITION ELBOW	150-6	LIFTERS, STALK	165-50
JET, PISTON COOLING (6081HN006)	20-12	LIGHT, CAB ROOF	40-57
JOINT, UNIVERSAL, CROSS SHAFT	165-27	LIGHT, CAB ROOF, FLOOD	
JOURNAL, PICKER BAR	120-16	(715201-)	40-60
JOURNAL, PICKER BAR	165-14	LIGHT, TRAP FLOOD	
		(20001-)	40-62
		LIGHTER, CIGARETTE	90-38
		LIGHTS - HALOGEN (CAB) (OPTIONAL)	90-2
		LIGHTS, HIGH INTENSITY DISCHARGE	
		(715201-)	40-61
KEY SWITCH CONNECTOR	40-54	LINE, FILTER HYDRAULIC, REAR AXLE	85-18

ALPHABETICAL INDEX - CONTINUED

	PAGE		PAGE
LINE, FUEL INJECTION	20-46	MONITOR LIGHT MODULES AND TACHOMETER	
LINE, FUEL INJECTION PUMP LUBE	20-46	CONNECTORS	40-56
LINE, TURBOCHARGER OIL (ESN -XXXXXX)	20-40	MONITOR, FLAP	40-63
LINE, TURBOCHARGER OIL (ESN XXXXXX-)	20-42	MONITOR, ROW UNIT	165-64
LINE, UNIT LUBRICATION	130-8	MONITOR, ROW UNIT	165-67
LINE, UNIT LUBRICATION	165-38	MONITOR, ROW UNIT	165-69
LINER, ENGINE CYLINDER (6081HN006)	20-18	MONITOR, ROW UNIT	165-73
LINES AND FILTER, FUEL	20-50	MONITOR, ROW UNIT	
LINES, HYDROSTATIC	50-38	WITH EHC	165-66
LINES, WATER SYSTEM CONTROL	140-8	MONITORING SYSTEM, BASKET FULL	160-54
LINES, WATER, MOISTENER COLUMN (CLEAR)	140-10	MOTOR ASSY., HYDRAULIC,	
LINES, WATER, MOISTENER COLUMN (CLEAR)	165-40	SAUER-SUNDSTRAND 100 CC (PROPULSION)	50-42
LINKAGE, GEARSHIFT	90-66	MOTOR ASSY., HYDRAULIC,	
LINKAGE, HEIGHT SENSING	110-34	SAUER-SUNDSTRAND 75 CC (UNIT DRIVE)	50-40
LINKAGE, HEIGHT SENSING	165-58	MOTOR, COMPACTOR DRIVE	160-36
9970	165-60	MOTOR, HEATER AND AIR CONDITIONER	90-52
LOAD CENTER WIRING HARNESS	40-4	MOTOR, HYDRAULIC	
LOAD CENTER WIRING HARNESS	40-5	POWER AXLE	85-6
LOWER GEAR CASE HUB	120-8	MOTOR, PRESSURE BLOWER	90-52
LUBRICATION FILL HOSE	130-3	MOTOR, RECIRCULATION BLOWER, HEATER AND	
LUBRICATION HOSE, LIFT ARM	100-4	AIR CONDITIONER	90-54
LUBRICATION MANIFOLD	130-7	MOTOR, STARTING (6081HN006)	20-54
LUBRICATION PUMP	130-6	MOTOR, TRANSMISSION DRIVE	50-2
LUBRICATION PUMP KIT	130-6	MOTOR, UNIT DRIVE	50-38
LUBRICATION PUMP SYSTEM	130-4	MOTOR, WINDSHIELD WIPER	90-30
LUBRICATION TRANSFER PUMP	130-10	MOTOR, WIPER (SHORT)	90-28
		MOUNTING FLANGE, AUXILIARY, HYDROSTATIC	
		PUMP	50-26
		MOUNTING TUBE, ROWTRAK	60-20
		MUD SCRAPERS	80-42
		MUFFLER	30-18
		MULT-DISK WET BRAKE	60-16
		N	
		NO(ZLE, PICKING UNIT BOTTOM FRAME	
		(PRO-16 UNIT)	110-14
		NON-POWERED GUIDE AXLE	80-14
		NOZZLE, DUCT	150-12
		NOZZLE, DUCT (36"-38"-40")	150-14
		NOZZLE, FUEL INJECTION	20-46
		NOZZLE, PICKING UNIT BOTTOM FRAME	165-12
		NOZZLE, PICKING UNIT BOTTOM FRAME	
		(PRO-12 UNIT)	110-12
		NOZZLES, AIR DUCT	150-6
		NUMBER 6 OFFSET COTTON DOOR	150-10
		NUMBER 6 OFFSET COTTON DOOR	150-11
		O	
		OFFSET CONTROL, ROW-TRAK	60-23
		OFFSET COTTON DOOR	
		NUMBER 6	150-10
		OFFSET COTTON DOOR	
		NUMBER 6	150-11
		OFFSET DUCT, R.H., 2.5"	165-70
		OIL COOLER	20-1
		OIL COOLER (6081HN006)	20-25
		OIL COOLER ADAPTER (6081HN006)	20-25
		OIL COOLER BY-PASS VALVE (6081HN006)	20-25
		OIL COOLER BYPASS (6081HN006)	20-26
		OIL COOLER, HYDRAULIC	70-3
		OIL COOLER, BRAKE	30-6
		OIL DIPSTICK / GUIDE (6081HN006)	20-38
		OIL FILTER, ENGINE	20-28

ALPHABETICAL INDEX - CONTINUED

	PAGE		PAGE
OIL LINE, TURBOCHARGER (ESN -XXXXXX)	20-40	PICKING UNIT GEAR CASE	120-6
OIL LINE, TURBOCHARGER (ESN XXXXXX-)	20-42	PICKING UNIT GEAR CASE	
OIL PAN, ENGINE	20-14	(4- AND 5-ROW PRO-12).....	165-22
OIL PRESSURE SWITCH, ENGINE	20-53	PICKING UNIT GEAR CASE	
OIL PUMP (6081HN006)	20-24	(4-ROW PRO-16)	165-24
OIL PUMP, ENGINE (6081HN006)	20-24	PICKING UNIT GEAR CASE	
OIL RESERVOIR, HYDRAULIC	70-2	(6-ROW PRO-12 AND 16).....	165-24
OIL SEAL, ENGINE FRONT (6081HN006)	20-21	PICKING UNIT GRID BARS AND SUPPORTS	
OIL, HY-GARD HYDRAULIC/TRANSMISSION	70-2	(PRO-12 18S).....	110-16
OPERATOR'S ARMREST PANEL	90-36	PICKING UNIT GRID BARS AND SUPPORTS	
OPERATOR'S ARMREST PANEL	90-38	(PRO-16 20S).....	110-18
OPERATOR'S SEAT	90-45	PICKING UNIT HANGER.....	110-10
OPERATOR'S SEAT ADJUST AND PIVOT		PICKING UNIT HANGER.....	165-10
ASSEMBLIES.....	90-50	PICKING UNIT HOUSING	110-1
OPERATOR'S SEAT CUSHION, ARMREST, AND		PICKING UNIT POSTS.....	165-8
MOUNTING.....	90-46	PICKING UNIT POSTS (PRO-12, 18S).....	110-6
OPERATOR'S SEAT PIVOT AND ADJUST	90-50	PICKING UNIT POSTS (PRO-16 20S).....	110-8
ORIFICE, PISTON COOLING JET		PICKING UNIT UPPER HOUSING	
(6081HN006).....	20-12	(PRO-12 UNIT).....	110-2
ORIFICE, UNIT LUBRICATION	130-8	PICKING UNIT UPPER HOUSING	
ORIFICE, UNIT LUBRICATION	165-38	(PRO-16 UNIT).....	110-4
OUTLET, CONVENIENCE, KIT	40-66	PICKING UNIT WIRING HARNESS	40-22
OUTSIDE MIRRORS	90-33	PINION, FINAL DRIVE.....	50-16
OUTTEXT	70-11	PINION, PICKING UNIT GEAR CASE.....	120-6
OVERFLOW TANK, RADIATOR.....	30-23	PINION, PICKING UNIT GEAR CASE	
OVERHAUL KIT, ENGINE (6081HN006)	20-32	(4- AND 5-ROW PRO-12).....	165-22
OVERHEAD CONSOLE	90-26	PINION, PICKING UNIT GEAR CASE	
		(4-ROW PRO-16)	165-24
		PINION, PICKING UNIT GEAR CASE	
		(6-ROW PRO-12 AND 16).....	165-24
		PIPE, EXHAUST	30-18
		PISTON COOLING JET (6081HN006)	20-12
		PISTON KIT, HYDROSTATIC PUMP SERVO	50-28
		PISTON RING, ENGINE	
		(6081HN006).....	20-18
		PISTON, ENGINE (6081HN006).....	20-18
		PISTON, HYDROSTATIC PUMP.....	50-32
		PIVOT PLATE, DUCT.....	150-12
		PIVOT PLATE, DUCT (36"-38"-40")	150-14
		PIVOT SUPPORT, REAR AXLE (FRONT).....	80-2
		PIVOT, OPERATOR'S SEAT	90-50
		PLANT GUIDE, PRO-12 - 18S.....	110-32
		PLATE, FRONT DRUM PRESSURE	165-16
		PLATE, FRONT DRUM PRESSURE (PRO-12 18S).....	110-20
		PLATE, FRONT DRUM PRESSURE (PRO-16 20S).....	110-22
		PLATE, PICKING UNIT BOTTOM FRAME	165-12
		PLATE, PICKING UNIT BOTTOM FRAME	
		(PRO-12 UNIT).....	110-12
		PLATE, PICKING UNIT BOTTOM FRAME	
		(PRO-16 UNIT).....	110-14
		PLATE, REAR DRUM PRESSURE	165-18
		PLATE, REAR DRUM PRESSURE (PRO-12 18S).....	110-24
		PLATE, REAR DRUM PRESSURE (PRO-16 20S).....	110-26
		PLATFORM FLOORS, AROUND CAB	
		(4 ROW).....	90-8
		PLATFORM FLOORS, AROUND CAB	
		(6 ROW).....	90-6
		PLATFORM FRAME	90-4
		PLATFORM HANDRAILS	
		(4 ROW).....	90-10
		PLATFORM HANDRAILS	
		(6 ROW).....	90-12
		PLATFORM LADDER	
		(4 ROW).....	80-38
		PLUG, ENGINE OIL DRAIN.....	20-14
		PLUG, ENGINE OIL FILTER HOUSING	20-28
		PLUGS AND SEALS, HYDROSTATIC PUMP.....	50-30

P

PAD, MOISTENER.....	140-14
PAD, MOISTENER.....	165-44
PAN, ENGINE OIL	20-14
PANEL, ARMREST	90-36
PANEL, CAB INTERIOR TRIM	90-16
PANEL, FLOOR	90-14
PANEL, OPERATOR'S ARMREST CONTROL.....	90-38
PANEL, OVERHEAD CONSOLE	90-26
PANELS, CHASSIS SIDE SHIELDING.....	80-34
PANELS, EXTERIOR.....	165-4
PANELS, HYDRAULIC MODULE	80-32
PANELS, SIDE	165-6
PANELS, TOP	165-6
PANELS, TUNNEL BOTTOM, CENTER	80-22
PANELS, TUNNEL BOTTOM, FRONT.....	80-20
PANELS, TUNNEL BOTTOM, REAR.....	80-24
PARK BRAKE HOSES AND FITTINGS.....	60-10
PASSIVE CAN BUS DEVICE.....	40-12
PASSIVE CAN BUS DEVICE (6 ROW).....	40-58
PEDAL, BRAKE	60-12
PICK-UP SENSOR, ENGINE MAGNETIC.....	40-71
PICKER BAR DRUM, STUD AND BEARING	120-20
PICKER BAR DRUM, STUD AND BEARING	165-20
PICKER BAR JOURNAL	120-16
PICKER BAR JOURNAL	165-14
PICKER BAR SPINDLE DRIVE SHAFT	120-18
PICKER BAR SPINDLE DRIVE SHAFT	165-14
PICKER BAR, SPINDLE AND WRENCH	120-16
PICKER BAR, SPINDLE AND WRENCH	165-14
PICKER DRUM HEAD	165-28
PICKER DRUM HEAD AND CAM	120-14
PICKING UNIT BOTTOM FRAME	165-12
PICKING UNIT BOTTOM FRAME	
(PRO-12 UNIT).....	110-12
PICKING UNIT BOTTOM FRAME	
(PRO-16 UNIT).....	110-14

ALPHABETICAL INDEX - CONTINUED

<i>PAGE</i>	<i>PAGE</i>		
PLUGS, UNIT CABINET	110-38	PUMP, HYDROSTATIC	50-38
PLUGS, UNIT CABINET	165-46	PUMP, LUBRICATION	130-4
POINT, STALKLIFTER, PRO-12 - 18S	110-32	PUMP, LUBRICATION	130-6
POPPET, HYDROSTATIC PUMP	50-30	PUMP, LUBRICATION TRANSFER	130-10
POST CONVERSION, INNER DOOR		PUMP, SOLUTION	140-6
9970	165-72	PUMP, WATER	140-6
POST, BASKET SUPPORT	160-2	PUMP, WATER (6081HN006)	20-22
POSTS, PICKING UNIT	165-8	PUMP, WATER, SUPPORT AND FITTINGS	140-4
POSTS, PICKING UNIT (PRO-12, 18S)	110-6	PUSH ROD, ENGINE	20-8
POSTS, PICKING UNIT (PRO-16 20S)	110-8		
POTENTIOMETER	90-26	R	
POTENTIOMETER, CONSOLE, ROW-TRAK	60-23	R.H. OFFSET DUCT, 2.5"	165-70
POTENTIOMETER, ROW-TRAK HYDRAULIC SYSTEM		RADIATOR	20-1
POWER AXLE	85-8	RADIATOR AND CHARGE AIR COOLER HOSES	30-20
POWER AXLE	85-4	RADIATOR HOSES	30-20
POWER AXLE BRACKET	85-12	RADIATOR OVERFLOW TANK	30-23
POWER AXLE FRAME	85-12	RADIATOR SIDE PANELS	80-34
POWER AXLE HYDRAULIC SYSTEM	85-6	RADIO, SPEAKERS AND ANTENNA	40-30
POWER AXLE ROW-TRAK HYDRAULIC SYSTEM	85-8	RADIUS GAUGES, DOFFER	120-26
POWER AXLE SWITCH	85-14	RAIL AND SHIFTER, TRANSMISSION HOUSING	50-14
POWER AXLE T-BLOCK	85-14	RAIL, FUEL INJECTION	20-46
POWER AXLE WHEEL	85-3	RAILS, BASKET LID	160-56
POWER STEERING VALVE	60-6	RAKE BAR, ROTARY SCREEN	30-8
POWERED REAR AXLE HARNESS	85-15	RAKE BAR, ROTARY SCREEN	30-10
POWERED REAR AXLE MOTOR	85-22	REAR AND SIDE CAB SEALS	90-14
POWERED REAR AXLE MOTOR	85-24	REAR AXLE BRACKET	80-12
POWERED SENSOR		REAR AXLE FILTER HYDRAULIC LINES	85-18
ROW-TRAK	85-1	REAR AXLE FRAME	80-12
POWERED SENSOR		REAR AXLE FRONT PIVOT SUPPORT	80-2
ROW-TRAK	85-2	REAR AXLE HYDRAULIC FILTER	85-18
POWERSHAFT SHIELD	165-27	REAR AXLE MOTOR, POWERED	85-22
PRESSURE PLATE, FRONT DRUM	165-16	REAR AXLE MOTOR, POWERED	85-24
PRESSURE PLATE, FRONT DRUM (PRO-12 18S)	110-20	REAR DRUM PRESSURE PLATE	165-18
PRESSURE PLATE, FRONT DRUM (PRO-16 20S)	110-22	REAR DRUM PRESSURE PLATE (PRO-12 18S)	110-24
PRESSURE PLATE, REAR DRUM	165-18	REAR DRUM PRESSURE PLATE (PRO-16 20S)	110-26
PRESSURE PLATE, REAR DRUM (PRO-12 18S)	110-24	REAR GUIDE BAR ASSMEBLIES	165-52
PRESSURE PLATE, REAR DRUM (PRO-16 20S)	110-26	REAR LIGHTS AND FUEL SENDER WIRING	
PRESSURE SWITCH, ENGINE OIL	20-53	HARNESS	40-7
PRESSURE VALVE ASSEMBLY	140-16	REAR OIL SEAL (6081HN006)	20-19
PRESSURE VALVE ASSEMBLY	140-18	REAR OIL SEAL GASKET (6081HN006)	20-19
PROBE ASSEMBLY	60-24	REAR OIL SEAL HOUSING (6081HN006)	20-19
PROTECTORS AND SUPPORTS, BASKET FLOOR		REAR VIEW MIRROR (CAB)(OPTIONAL)	90-2
CONVEYOR CHAIN	160-30	REAR VIEW MIRRORS	90-33
PULLEY, ALTERNATOR	40-37	REAR WHEEL	80-9
PULLEY, COTTON FAN DRIVE	150-2	REAR, FRONT WARNING LAMPS	40-6
PULLEY, CRANKSHAFT	20-16	RECEIVER-DRYER, AIR CONDITIONER	90-65
PULLEY, FAN (6081HN006)	20-34	REFLECTORS	170-14
PULLEY, HYDRAULIC PUMP DRIVE	70-1	REGULATOR, ALTERNATOR VOLTAGE	40-36
PUMP CONTROL LEVERS AND RODS,		RELAY, STARTER	40-32
HYDROSTATIC	50-24	RELAYS AND CIRCUIT BREAKERS	40-32
PUMP DISPLACEMENT CONTROL, HYDROSTATIC	50-34	RELAYS, LOAD CENTER WIRING HARNESS	40-4
PUMP DRIVE, HYDROSTATIC	50-21	RELAYS, LOAD CENTER WIRING HARNESS	40-5
PUMP END CAP, HYDROSTATIC	50-36	RELIEF VALVE, ENGINE OIL FILTER PRESSURE	20-28
PUMP FRAME ASSEMBLY, HYDRO	80-28	REPAIR SHELL, VRS	165-1
PUMP HOUSING, SWASHPLATE AND CYLINDER		RESERVOIR WIRING HARNESS, HYDRO	40-11
BLOCK, HYDROSTATIC	50-32	RESERVOIR, HYDRAULIC	70-2
PUMP MOUNTING, AUX. PUMP TO HYDROSTATIC		RESET HANDLE, BASKET	160-48
PUMP	50-26	RESTRICTOR, FUEL INJECTION RAIL	20-46
PUMP SHAFT AND LEVELER ASSY.,		RETURN AND PRESSURE HOSES, BASKET	70-34
HYDROSTATIC	50-28	RETURN HYDRAULIC FILTER HOSES AND FITTING	
PUMP VALVES, HYDROSTATIC	50-30	GS	70-32
PUMP WIRING HARNESS, HYDRO	40-11	RIMS, SINGLE DRIVE WHEELS	80-11
PUMP, CHARGE, HYDROSTATIC DRIVE	50-25	RING GEAR, FLYWHEEL	20-20
PUMP, ENGINE OIL (6081HN006)	20-24	RING, REAR WHEEL BOLT	80-9
PUMP, FUEL INJECTION	20-46	RING, WATER PUMP RETAINING (6081HN006)	20-22
PUMP, FUEL INJECTION HAND PRIMER	20-46		
PUMP, HYDRAULIC (45 CM3 (2.75 CU. IN.))	70-10		

ALPHABETICAL INDEX - CONTINUED

	PAGE		PAGE
ROCKER ARM COVER, ENGINE	20-6	SEAL, WATER PUMP (6081HN006).....	20-22
ROCKER ARM, ENGINE	20-8	SEALS, EXTERIOR PANELS	165-4
ROD, ENGINE CONNECTING (6081HN006).....	20-18	SEAT CONSOLE, PASSENGER.....	90-40
ROD, ENGINE PUSH.....	20-8	SEAT CUSHIONS, PASSENGER	90-40
ROD, HEIGHT SENSING LINKAGE	110-34	SEAT SUSPENSION.....	90-48
ROD, HEIGHT SENSING LINKAGE.....	165-58	SEAT, OPERATOR'S.....	90-45
RODS, HYDROSTATIC PUMP CONTROL LEVER	50-24	SEATBELT, INSTRUCITONAL SEAT	90-44
RODS, STALKLIFTER	110-36	SENDER, ENGINE COOLANT TEMPERATURE	40-70
ROLLER, PICKING UNIT HANGER.....	110-10	SENDER, FUEL GAUGE	30-16
ROLLER, PICKING UNIT HANGER	165-10	SENDER, LUBRICATION PRESSURE	130-7
ROOF, CAB INTERIOR		SENSOR BRACE, ROW-TRAK	60-22
(715101-).....	90-24	SENSOR, BACKUP ALARM	40-64
ROOF, INTERIOR CAB.....	90-22	SENSOR, BACKUP ALARM	40-65
ROTARY SCREEN	30-8	SENSOR, BASKET FULL MONITORING SYSTEM	160-54
ROTARY SCREEN.....	30-10	SENSOR, DIFFERENTIAL	50-8
ROTARY SCREEN DOOR	30-4	SENSOR, DIFFERENTIAL	50-10
ROTARY SCREEN DRIVE AND IDLER ARMS	30-14	SENSOR, DRUM SPEED	120-12
ROTOR, FAN	150-2	SENSOR, DRUM SPEED	165-28
ROW UNIT MONITOR	165-64	SENSOR, ENGINE COOLANT TEMPERATURE	40-68
ROW UNIT MONITOR	165-67	SENSOR, ENGINE MAGNETIC PICK-UP	40-71
ROW UNIT MONITOR	165-69	SENSOR, ENGINE SPEED	40-71
ROW UNIT MONITOR	165-73	SENSOR, EVAPORATOR TEMPERATURE	90-62
ROW UNIT MONITOR		SENSOR, FAN	150-2
WITH EHHC.....	165-66	SENSOR, FEEDBACK, ROW-TRAK	85-10
ROW-TRAK FEEDBACK SENSOR AND WRENCH.....	85-10	SENSOR, FUEL INJECTION PUMP POSITION (G)	20-46
ROW-TRAK FEEDBACK SENSOR BRACE	60-22	SENSOR, FUEL RAIL PRESSURE	20-46
ROW-TRAK HYDRAULIC SYSTEM		SENSOR, FUEL TEMPERATURE	20-50
POWER AXLE.....	85-8	SENSOR, HEIGHT SENSING	110-34
ROW-TRAK HYDRAULIC SYSTEM POTENTIOMETER		SENSOR, HEIGHT SENSING	165-58
POWER AXLE.....	85-8	SENSOR, HEIGHT, VALVE	
ROW-TRAK OFFSET CONTROL	60-23	9970.....	165-62
ROW-TRAK SENSOR NON-POWERED AXLE	80-16	SENSOR, INTAKE MANIFOLD TEMPERATURE	40-69
ROWTRAK GUIDANCE SYSTEM	60-24	SENSOR, OPERATOR'S ARMREST CONTROL PANEL.....	90-36
ROWTRAK MOUNTING TUBE.....	60-20	SENSOR, OVERHEAD CONSOLE	90-26
ROWTRAK UNIT	60-21	SENSOR, POWERED	
		ROW-TRAK	85-1
		SENSOR, POWERED	
		ROW-TRAK	85-2
		SENSOR, ROW-TRAK NON-POWERED AXLE	80-16
		SENSOR, TEMPERATURE, HEATER AND A/C.....	90-52
		SENSOR, TEMPERATURE, HEATER AND A/C.....	90-54
		SENSORS, HEIGHT SENSING	
		9970.....	165-60
		SERVICE KIT, ELECTRICAL CONNECTORS	40-46
		SERVICE KIT, ELECTRICAL CONNECTORS	40-48
		SERVO ASSY., HYDROSTATIC PUMP	50-28
		SHAFT, COMPACTOR DRIVE	160-36
		SHAFT, CONVEYOR SPROCKET, BASKET DOOR	160-18
		SHAFT, CONVEYOR SPROCKET, BASKET FLOOR.....	160-28
		SHAFT, CROSS	120-5
		SHAFT, CUTTER	165-36
		SHAFT, DOFFER	120-24
		SHAFT, DOFFER	165-32
		SHAFT, DOFFER STUB	120-22
		SHAFT, DOFFER STUB	165-34
		SHAFT, DRIVE, AXLE.....	80-6
		SHAFT, DRUM SLIP CLUTCH AND IDLER GEARS.....	120-10
		SHAFT, DRUM SLIP CLUTCH AND IDLER GEARS	165-30
		SHAFT, ENGINE FAN DRIVE	30-12
		SHAFT, ENGINE ROCKER ARM.....	20-8
		SHAFT, FAN DRIVE	150-2
		SHAFT, FAN DRIVE PULLEY (6081HN006).....	20-34
		SHAFT, HYDROSTATIC CHARGE PUMP	50-26
		SHAFT, HYDROSTATIC PUMP.....	50-28
		SHAFT, KICKER DRIVE	165-54
		SHAFT, LOWER GEAR CASE HUB	120-8
		SHAFT, NON-POWERED GUIDE AXLE.....	80-14
S			
SADDLE, WATER TANK	140-2		
SAFETY DECALS.....	170-12		
SCHEMATIC, ELECTRICAL WIRING	40-14		
SCHEMATIC, ELECTRICAL WIRING	40-16		
SCRAPER, FRONT DRUM PRESSURE PLATE	165-16		
SCRAPER, FRONT DRUM PRESSURE PLATE			
(PRO-12 18S).....	110-20		
SCRAPER, FRONT DRUM PRESSURE PLATE			
(PRO-16 20S).....	110-22		
SCRAPERS, MUD	80-42		
SCREEN AND TUBE, TRANSMISSION OIL.....	50-4		
SCREEN, ALTERNATOR.....	40-36		
SCREEN, BASKET EXTENSION LID	160-38		
SCREEN, BASKET EXTENSION, FRONT.....	160-40		
SCREEN, BASKET EXTENSION, LEFT	160-44		
SCREEN, BASKET EXTENSION, REAR	160-46		
SCREEN, BASKET EXTENSION, RIGHT.....	160-42		
SCREEN, BASKET, LOWER RIGHT SIDE.....	160-8		
SCREEN, CONTROL FILTER, HYDROSTATIC			
PUMP	50-30		
SCREEN, ROTARY	30-8		
SCREEN, ROTARY	30-10		
SCREEN, ROTARY, DOOR ASSEMBLY	30-4		
SCREENS, BASKET LID EXTENSION	160-50		
SEAL, CAB SIDE AND REAR	90-14		
SEAL, ENGINE FRONT OIL (6081HN006)	20-21		
SEAL, OIL COOLER (6081HN006)	20-25		
SEAL, REAR OIL (6081HN006)	20-19		

ALPHABETICAL INDEX - CONTINUED

	PAGE		PAGE
SHAFT, PICKER BAR	120-18	SPEAKER GRILLE	90-22
SHAFT, PICKER BAR	165-14	SPEAKER, ANTENNA AND RADIO	40-30
SHAFT, PICKING UNIT GEAR CASE	120-6	SPECIAL TOOL, DOFFER RADIUS	165-32
SHAFT, PICKING UNIT GEAR CASE (4- AND 5-ROW PRO-12)	165-22	SPIDER ASSEMBLY, ENGINE FAN	30-12
SHAFT, PICKING UNIT GEAR CASE (4-ROW PRO-16)	165-24	SPINDLE	120-16
SHAFT, PICKING UNIT GEAR CASE (6-ROW PRO-12 AND 16)	165-24	SPINDLE	165-14
SHAFT, TRANSMISSION INPUT	50-4	SPINDLE CLEANER AND WETTING AGENT	140-2
SHAFT, TRANSMISSION INTERMEDIATE	50-6	SPINDLE MOISTENER COLUMN	140-14
SHAFT, TRANSMISSION PINION	50-12	SPINDLE MOISTENER COLUMN	165-44
SHAFT, UNIT DRIVE (COUNTERSHAFT)	120-2	SPINDLE, NON-POWERED GUIDE AXLE	80-14
SHAFT, UPPER HOUSING DRUM DRIVE GEAR	120-12	SPLINED COUPLING, DRIVE AXLE	80-6
SHAFT, UPPER HOUSING DRUM DRIVE GEAR	165-28	SPRING, BRAKE PEDAL	60-12
SHAFT, WINDSHIELD WIPER	90-30	SPRING, DRUM SLIP CLUTCH	120-10
SHEAVE, ENGINE COOLING FAN	30-12	SPRING, DRUM SLIP CLUTCH	165-30
SHEAVE, HYDRAULIC PUMP DRIVE	70-1	SPRING, LATCH, CAB DOOR	90-20
SHEAVE, HYDROSTATIC PUMP DRIVE	70-1	SPRING, LOWER GEAR CASE HUB	120-8
SHEAVE, ROTARY SCREEN DRIVE	30-14	SPRING, STEERING COLUMN	60-4
SHEAVE, UNIT DRIVE COUNTERSHAFT	120-2	SPRING, VALVE (ENGINE) (6081HN006)	20-4
SHEAVE, WATER PUMP DRIVE	140-4	SPROCKETS, CONVEYOR, BASKET DOOR	160-18
SHELL, COMPLETE UNIT (PRO-16)	110-8	SPROCKETS, CONVEYOR, BASKET FLOOR	160-28
SHELL, VRS, REPAIR	165-1	SPUR GEAR, DRUM IDLER	120-10
SHIELD, EXHAUST VALVE (6081HN006)	20-4	SPUR GEAR, DRUM IDLER	165-30
SHIELD, FRONT WHEEL, RH	80-36	SPUR GEAR, LOWER GEAR CASE HUB	120-8
SHIELD, LH FRONT WHEEL, 4 ROW WITH DUAL WHEELS	80-38	STABILIZER, TOP LINK	100-1
SHIELD, PICKING UNIT GEAR CASE	120-6	STALK LIFTERS	165-50
SHIELD, PICKING UNIT GEAR CASE (4- AND 5-ROW PRO-12)	165-22	STALKLIFTER RODS	110-36
SHIELD, PICKING UNIT GEAR CASE (4-ROW PRO-16)	165-24	STALKLIFTERS, EXTENSION AND GRATE PRO-12 - 18S	110-32
SHIELD, PICKING UNIT GEAR CASE (6-ROW PRO-12 AND 16)	165-24	STAND, REAR BASKET	160-14
SHIELD, POWERSHAFT	165-27	STARTER RELAY	40-32
SHIELD, STALKLIFTER, PRO-12 - 18S	110-32	STARTING AID, COLD WEATHER	30-22
SHIELD, WIRING HARNESS	80-18	STARTING MOTOR (6081HN006)	20-54
SHIELDING, CHASSIS SIDE	80-34	STARTING MOTOR CLUTCH (6081HN006)	20-54
SHIELDS, STALK LIFTER	165-50	STARTING MOTOR SOLENOID SWITCH (6081HN006)	20-54
SHIFTER AND RAIL, TRANSMISSION HOUSING	50-14	STARTING SWITCH	60-2
SHIM, ENGINE CYLINDER LINER (6081HN006)	20-18	STEERING COLUMN (LOWER)	60-4
SHIM, PICKER BAR DRUM	165-20	STEERING COLUMN (UPPER)	60-2
SHOE, HEIGHT SENSING	110-34	STEERING COLUMN HARNESS	40-43
SHOE, HEIGHT SENSING	165-58	STEERING LINES, HYDRAULIC	60-8
SHOE, STALK LIFTER	165-50	STEERING MOTOR ANCHOR	85-26
SHOE, STALKLIFTER POINT, PRO-12 - 18S	110-32	STEERING PUMP - STEERING SHAFT	60-4
SHORT BLOCK ASSEMBLY, ENGINE	20-10	STEERING VALVE (ROW TRAK)	60-14
SHORT BLOCK GASKET KIT (6081HN006)	20-30	STEERING VALVE, POWER	60-6
SIDE AND REAR CAB SEALS	90-14	STEERING WHEEL	60-2
SIDE FRAMES, ENGINE	80-8	STEERING WHEEL ADJUSTER PEDAL	60-4
SIDE PANELS	165-6	STEPS, LADDER DUCT	150-16
SIDE PANELS, CHASSIS	80-34	STRAINER, GREASE	130-7
SKIP DOOR ASSEMBLY 9970	165-75	STRAINER, MOISTENER COLUMN	140-14
SKIP ROW GEAR BOX	120-1	STRAINER, MOISTENER COLUMN	165-44
SLIP CLUTCH AND IDLER GEARS, DRUM	120-10	STRAINER, WATER	140-7
SLIP CLUTCH AND IDLER GEARS, DRUM	165-30	STRAINER, WATER TANK	140-2
SLIP CLUTCH, FEEDER	165-48	STRAP, ALTERNATOR ADJUSTING	40-38
SLIP CLUTCH, LOWER GEAR CASE HUB	120-8	STRAP, ENGINE LIFT	20-27
SOLENOID SWITCH, STARTING MOTOR (6081HN006)	20-54	STUD, PICKER BAR DRUM	120-20
SOLENOID VALVE, HYDROSTATIC FITTINGS	50-44	STUD, PICKER BAR DRUM	165-20
SOLENOID VALVE, UNIT LIFT CONTROL	70-8	SUN VISOR	90-22
SOLENOID VALVE, UNIT LIFT CONTROL	70-9	SUN VISOR, CAB ROOF (715101-)	90-24
SPACER, AXLE	80-10	SUPPLEMENTARY TERMINALS AND CONNECTORS	40-52
SPACERS, AXLE	80-6	SUPPORT ASSEMBLY, BASKET	160-2
		SUPPORT, ALTERNATOR	40-38
		SUPPORT, COOLING FRAME	30-6
		SUPPORT, DUCT	150-18
		SUPPORT, MOISTENER COLUMN	140-14
		SUPPORT, MOISTENER COLUMN	165-44
		SUPPORT, REAR AXLE PIVOT (FRONT)	80-2